

Created for performance by the Immanuel Bach Consort,  
and dedicated to Dr. Gerre Hancock (1934-2012)

Cello

# Christ lag in Todes Banden

(Cantata #4)

Johann Sebastian Bach  
(1685-1750)

*Sinfonia*



7



11



Cello  
Christ lag in Todes Banden, BWV 4

*Verse 1 & 7 (Alternate chorus version)*



Cello  
Christ lag in Todes Banden, BWV 4

30



33



36



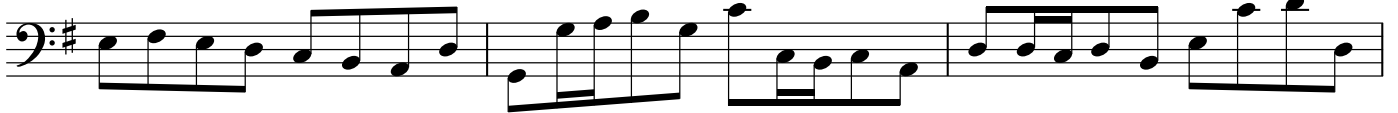
39



42



45



48



52



56



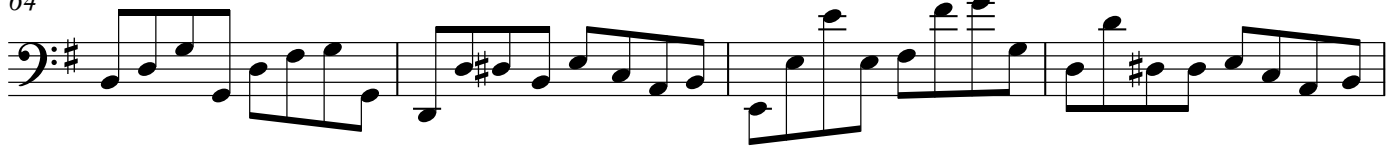
V.S.

Cello  
Christ lag in Todes Banden, BWV 4

60



64



68

*alla breve*



72



76



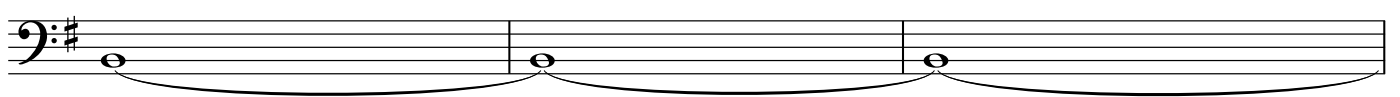
81



85



89



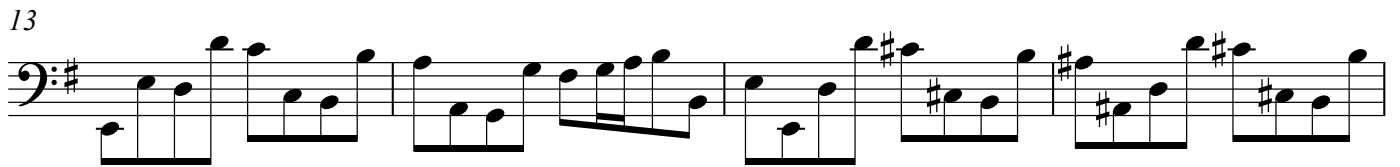
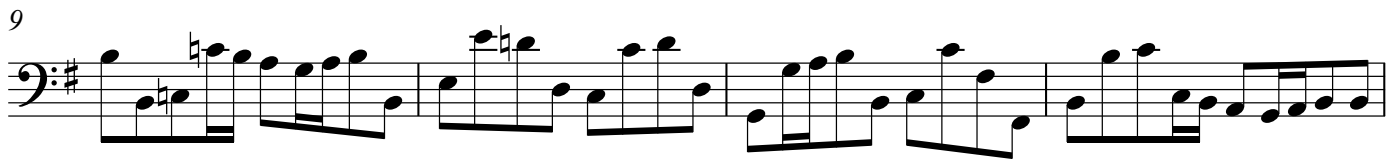
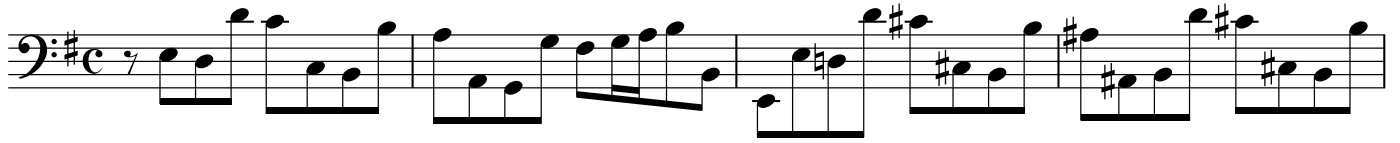
92



**Page inserted to facilitate page turning.**

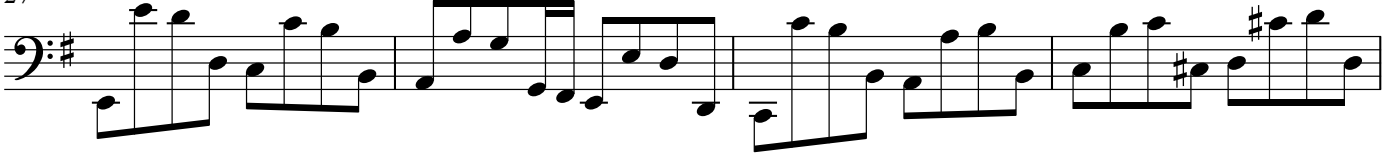
Cello  
Christ lag in Todes Banden, BWV 4

*Verse 2*

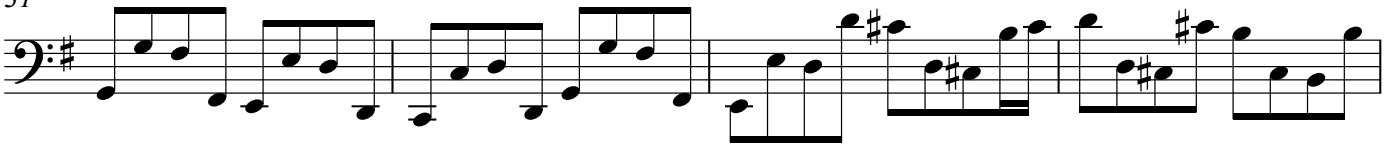


Cello  
Christ lag in Todes Banden, BWV 4

27



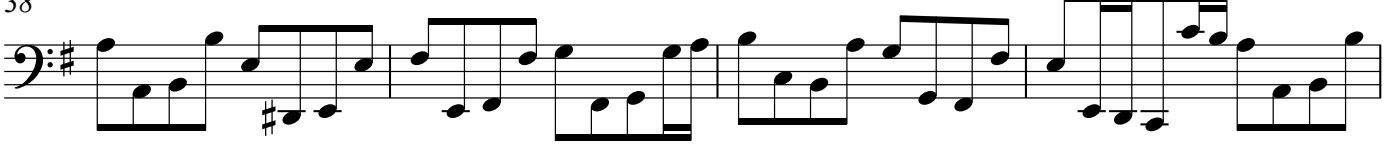
31



35



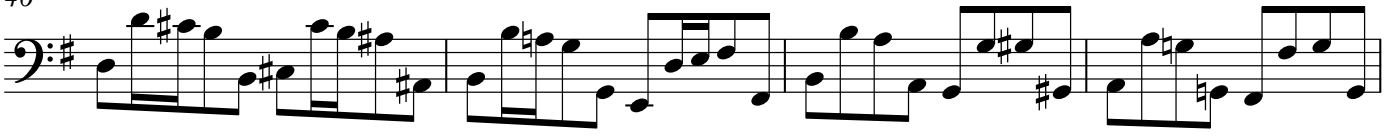
38



42



46

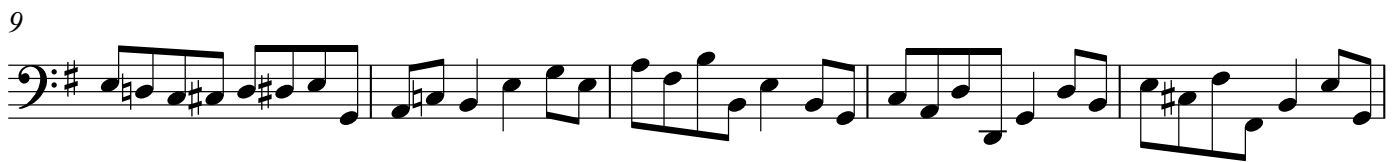


50



Cello  
Christ lag in Todes Banden, BWV 4

*Verse 3*



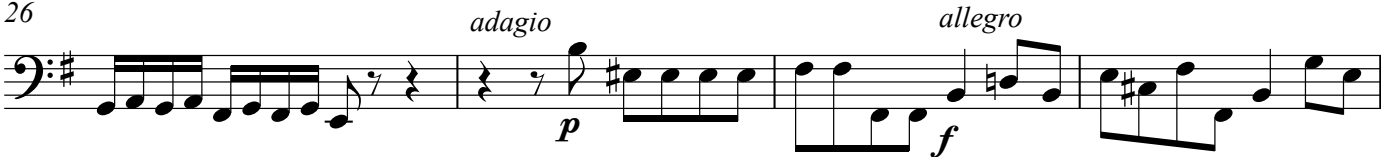


Cello  
Christ lag in Todes Banden, BWV 4

22



26



30



34



37



40



Cello  
Christ lag in Todes Banden, BWV 4

*Verse 4*



Cello  
Christ lag in Todes Banden, BWV 4

19



22



26



30



34



38



41



Cello  
Christ lag in Todes Banden, BWV 4

Verse 5

7

13

19

25

31

37

44

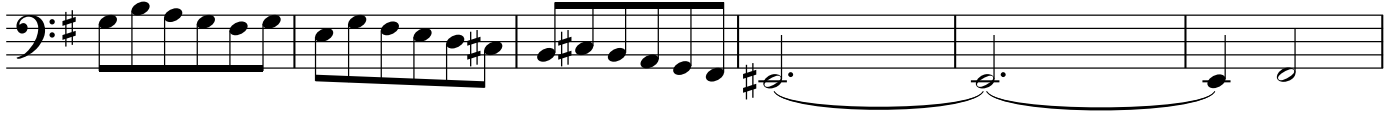
51

Cello  
Christ lag in Todes Banden, BWV 4

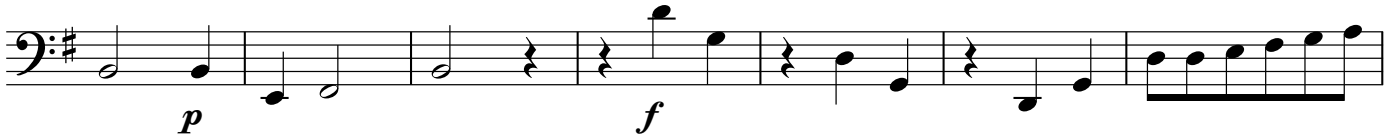
57



62



68



75



80



86

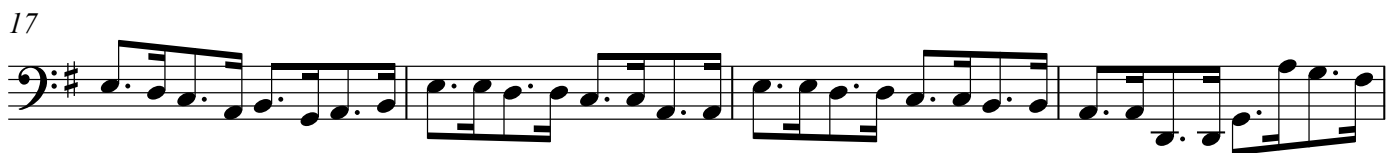


91



Cello  
Christ lag in Todes Banden, BWV 4

*Verse 6*



Cello  
Christ lag in Todes Banden, BWV 4

21

25

29

33

37

41

Cello  
Christ lag in Todes Banden, BWV 4

*Verse 7 (Chorale version)*

