

Violin
Christ lag in Todes Banden, BWV 4

Verses 1 & 7 (alternate version)

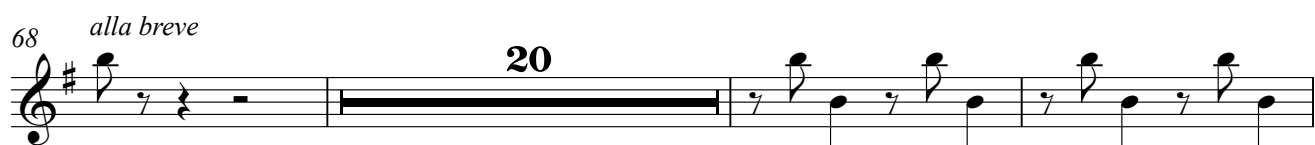


Violin
Christ lag in Todes Banden, BWV 4



V.S.

Violin
Christ lag in Todes Banden, BWV 4



Verse 2 (soprano/alto duet) - tacet

Violin
Christ lag in Todes Banden, BWV 4

Verse 3

1
3
5
7
9
12
14
16
18

Violin
Christ lag in Todes Banden, BWV 4

20



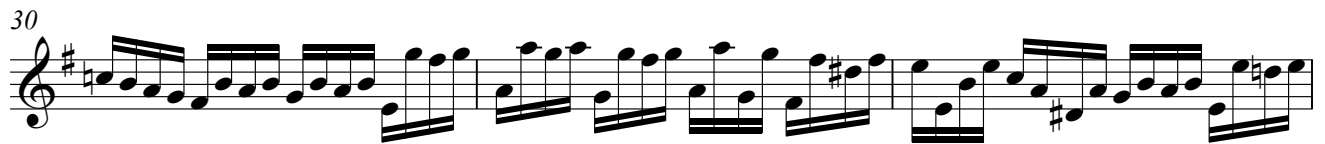
23



27 *adagio* *allegro*



30



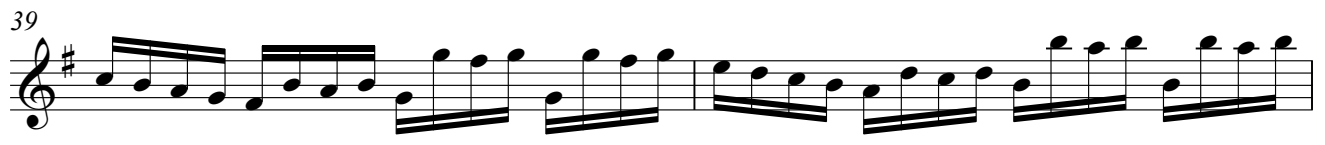
33



36



39



41



Violin
Christ lag in Todes Banden, BWV 4

Verse 5

5

12

20

28

35

45

53

63

71

f

p

tr

3

V.S.

Violin
Christ lag in Todes Banden, BWV 4

75 **6**

88

92 *tr*

The image shows three staves of musical notation for a violin part. The first staff starts at measure 75 with a measure rest and a '6' above it, indicating a sixteenth-note rhythm. The second staff starts at measure 88 and features a slur over a group of notes. The third staff starts at measure 92 and includes a trill ('tr') over a note. The key signature is one sharp (F#) and the time signature is 4/4.

Verse 6 (Soprano/Tenor duet) - tacet

If using the Chorale version of Verse 7, go to the next page.
If using the (alternate) Chorus version of Verse 7, repeat the music from Verse 1.

Violin
Christ lag in Todes Banden, BWV 4

Verse 7 (Chorale version)

