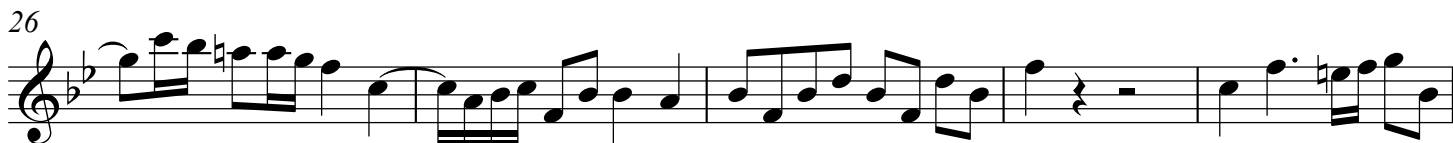
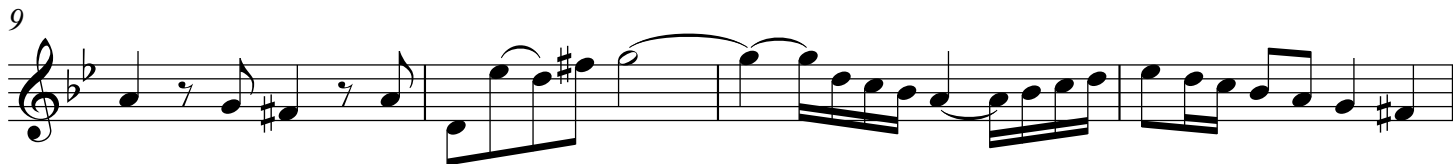


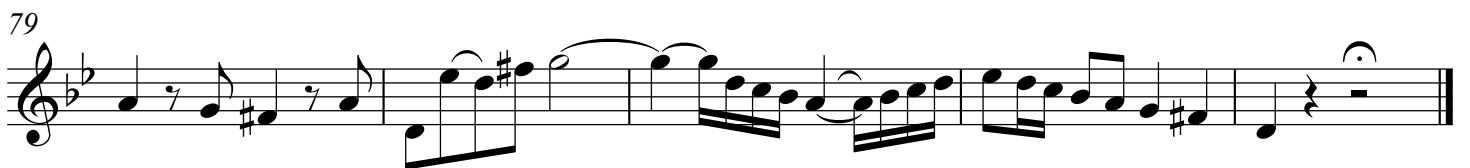
*Created for performance by the Immanuel Bach Consort,  
and dedicated to Dr. Gerre Hancock (1934-2012)*  
**Meine Seel erhebt den Herren**  
(S. 10)

Violin

Johann Sebastian Bach  
(1685-1750)







Violin

2. Aria (Soprano)

Measures 1-4 of the violin part. The key signature has two flats (B-flat and E-flat), and the time signature is common time (C). The first measure contains a complex rhythmic pattern with eighth and sixteenth notes. Measures 2 and 3 feature a melodic line with trills (tr) and slurs. Measure 4 continues the melodic line with a trill and a slur.

Measures 5-8 of the violin part. Measure 5 begins with a measure rest. Measures 6 and 7 contain a melodic line with a slur and a dynamic marking of *p* (piano). Measure 8 features a melodic line with a dynamic marking of *f* (forte) and a slur.

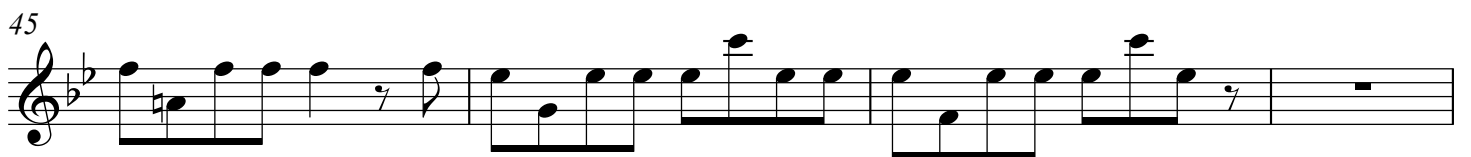
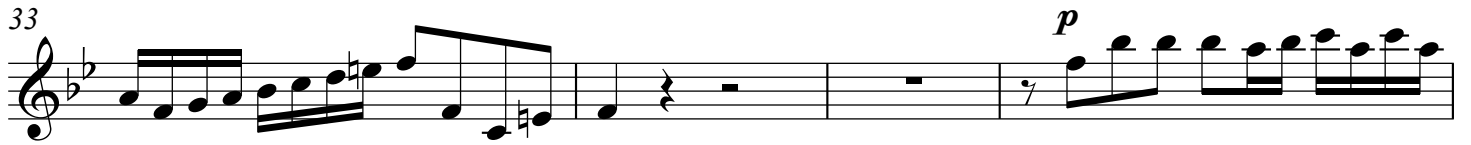
Measures 9-12 of the violin part. Measures 9 and 10 show a melodic line with a slur. Measures 11 and 12 continue the melodic line with a slur.

Measures 13-16 of the violin part. Measure 13 starts with a measure rest and a dynamic marking of *p*. Measures 14 and 15 feature a melodic line with a slur. Measure 16 continues the melodic line with a slur.

Measures 17-20 of the violin part. Measures 17 and 18 contain a melodic line with a slur. Measures 19 and 20 continue the melodic line with a slur.

Measures 21-24 of the violin part. Measures 21 and 22 feature a melodic line with a slur. Measures 23 and 24 continue the melodic line with a slur.

Measures 25-28 of the violin part. Measure 25 starts with a measure rest. Measure 26 begins with a dynamic marking of *f* and a melodic line with a slur. Measures 27 and 28 continue the melodic line with a slur.



57

60

63

65

68

70

72

75

## 6. Tenor recitative



Violin

7. Chorale

